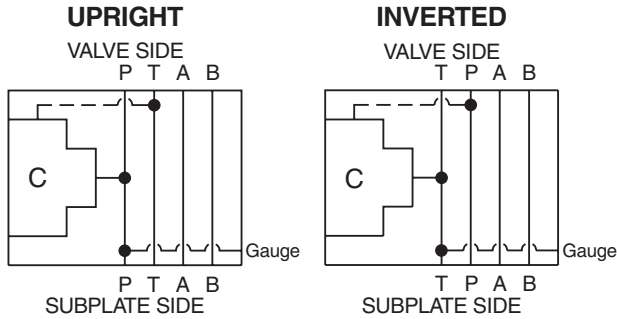


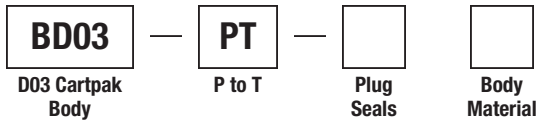
General Description

P to T D03 Cartpak Body.
 For additional information see Technical Tips on pages CB1-CB3.

Body Schematic



Ordering Information

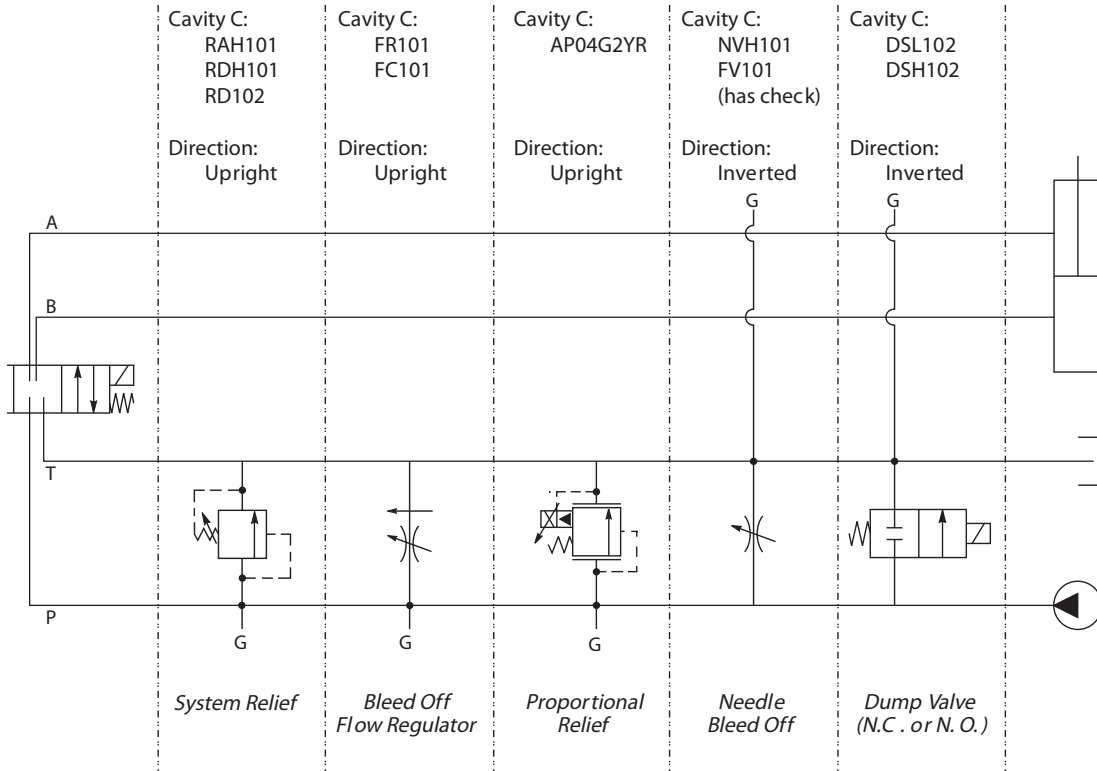
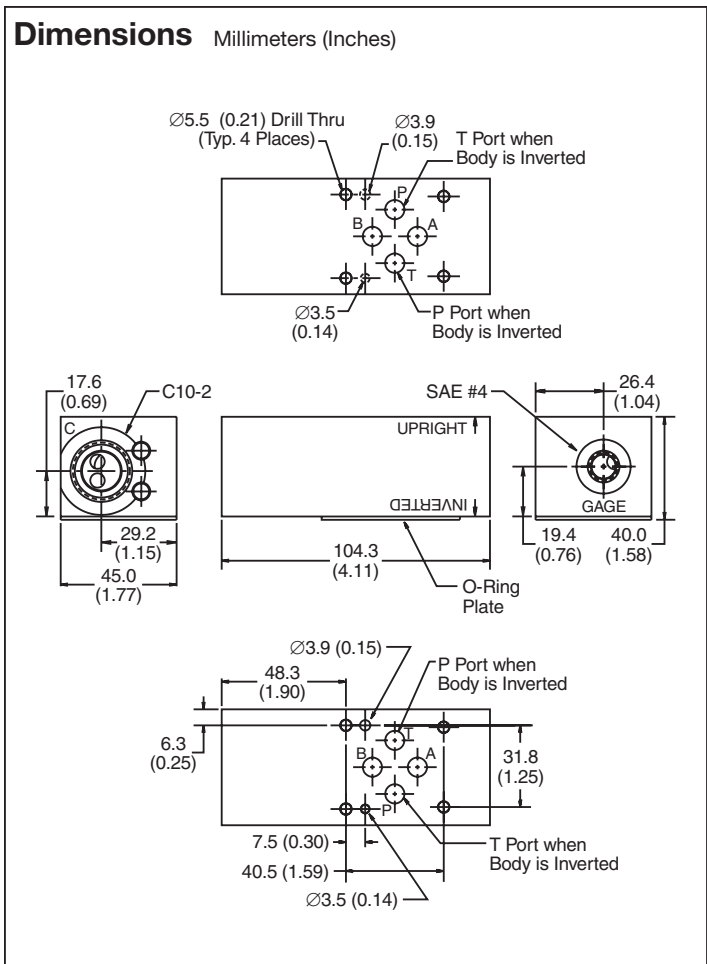


Code	Plug Seals
Omit	Nitrile

Code	Body Material
A	Aluminum
S	Steel (Ductile Iron)

Body supplied with:

- Gage Port Plug Installed
- O-Ring Plate, O-Rings and Drive Pin Kit



- CV Check Valves
- SH Shuttle Valves
- LM Load/Motor Controls
- FC Flow Controls
- PC Pressure Controls
- LE Logic Elements
- DC Directional Controls
- MV Manual Valves
- SV Solenoid Valves
- PV Proportional Valves
- CE Coils & Electronics
- CB Cartpak Bodies
- BC Bodies & Cavities
- TD Technical Data